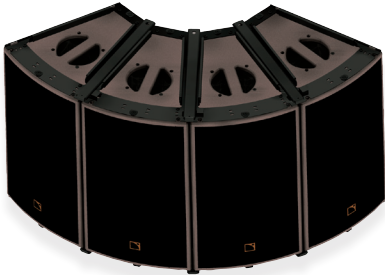




ARCS WIDE ARCS FOCUS

CONSTANT CURVATURE WST LINE SOURCES



The ARCS® WIDE and ARCS® FOCUS systems are based on two constant curvature enclosures ensuring distinct directivity pattern and SPL capabilities. Intended for medium-throw applications in rental productions and fixed installations, these line sources deliver remarkable acoustic properties and unmatched versatility for applications including FOH L/R systems, central clusters, side-fill monitors, distributed systems and complementary fills. The main system components are as follows:

- ARCS WIDE (H x V: 30° x 90°) full-range element, wide coverage, operating from 55 Hz to 20 kHz
- ARCS FOCUS (H x V: 15° x 90°) full-range element, focused energy, operating from 55 Hz to 20 kHz
- SB18m, low-frequency element, operating down to 32 Hz
- LA4X or LA8 amplified controllers



The ARCS WIDE or ARCS FOCUS line sources provide high SPL with perfect acoustic coupling, a solid LF performance and constant tonal balance over distance. Both systems can be deployed either as a horizontal array or as a vertical array.

In the coupling plane, the ARCS WIDE and ARCS FOCUS yield a razor-sharp directivity pattern, particularly valuable to sector audience fields while avoiding reflective surfaces. In the other plane, both systems provide a 90° smooth symmetric directivity pattern.

The ARCS WIDE is suited to achieve an extensive coverage with few elements, offering a remarkably compact array preserving sightlines. The total coverage angle of an ARCS WIDE line source is proportional to the number N of enclosures in the array, i.e. $N \times 30^\circ$.

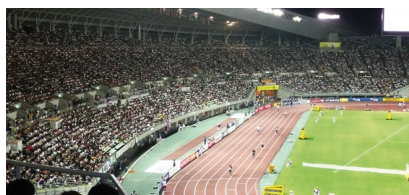
The ARCS FOCUS line source focuses the same acoustic energy within half of the coverage angle, i.e. $N \times 15^\circ$. The ARCS FOCUS is therefore suited to achieve a narrower coverage, offering a higher SPL with a more extended throw than its sibling.



The ARCS WIDE and ARCS FOCUS can also be deployed in “WIFO” hybrid arrays for complex audience geometries. The dual directivity pattern and the various system configurations offered to the sound designer and system engineer allow a high level of creative freedom. Before installation, all these configurations can be acoustically and mechanically modeled with the SOUNDVISION 3D simulation software.

The LA4X and LA8 amplified controllers are the heart of the system. Both enclosures can be precisely driven with the same factory preset. All L-ACOUSTICS amplified controllers feature the L-DRIVE, a thermal and over-excursion protection circuit.

Up to 253 LA8 amplified controllers can be connected together via the Ethernet-based L-NET protocol. The LA NETWORK MANAGER software allows online remote control and monitoring of all the connected units, via a user-friendly and intuitive graphic interface, and features the Array Morphing EQ. This exclusive tool allows the engineer to quickly adjust the tonal balance of the system to reach a reference curve or to ensure consistency of the sonic signature.



ARCS WIDE AND FOCUS SYSTEM COMPONENTS

ARCS WIDE^{1,2}

Constant curvature WST® enclosure, 30° x 90° (provided with 2 coupling bars).
Bandwidth = 55 Hz to 20 kHz.



ARCS FOCUS^{1,2}

Constant curvature WST enclosure, 15° x 90° (provided with 2 coupling bars).
Bandwidth = 55 Hz to 20 kHz.



SB18m^{1,2}

Dual bass reflex subwoofer (provided with 2 coupling bars).
LF limit = 32 Hz.



LA4X/LA8/LA NETWORK MANAGER¹

Amplified controller with DSP library and networking capabilities.
Remote control software.



WIFOLIFT^{2,3}

Rigging bar for flying a horizontal ARCS WIDE/FOCUS array.
Certified for up to 4 ARCS WIDE/FOCUS enclosures.



WIFOBUMP^{2,3}

Rigging frame for flying a vertical ARCS WIDE/FOCUS/SB18m array.
Certified for up to 8 ARCS WIDE/FOCUS or SB18m.



WIFOSOCK/CLAMP250/WIFOTILT³

Pole mount socket for 1 ARCS WIDE/FOCUS enclosure.



Clamp certified for up to 6 ARCS WIDE/FOCUS or 4 SB18m.

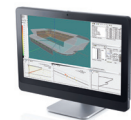


Support for stacking and tilting up to 4 ARCS WIFO on SB18m.



SOUNDVISION

3D acoustic and mechanical simulation software dedicated to L-ACOUSTICS products.



¹ See product spec sheet for more details. ² Available in white and custom RAL colors. ³ Verify the mechanical conformity of any installation using SOUNDVISION.

ARCS WIDE AND FOCUS SYSTEM CONFIGURATION

Two loudspeaker configurations are available for the systems:

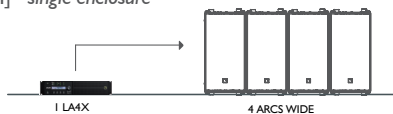
STANDALONE ARCS "WIFO"

Deployed as a standalone system, an ARCS "WIFO" system operates over the nominal bandwidth of the enclosures. An LA4X can drive up to 4 ARCS WIDE/FOCUS enclosures. An LA8 can drive up to 8 ARCS WIDE/FOCUS enclosures.

Preset:

[ARCS WIFO] - line source

[ARCS WIFO_FI] - single enclosure



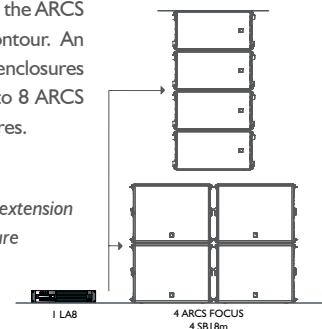
ARCS "WIFO" + SB18M

Deployed with SB18m as additional LF element, the ARCS "WIFO" system provides an enhanced LF contour. An LA4X can drive up to 4 ARCS WIDE/FOCUS enclosures or 4 SB18m enclosures. An LA8 can drive up to 8 ARCS WIDE/FOCUS enclosures or 8 SB18m enclosures.

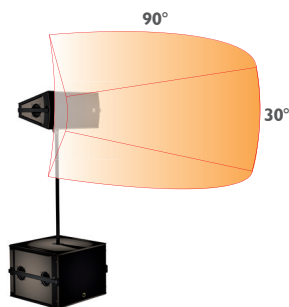
Preset:

[ARCS WIFO] + [SB18_60] - line source + LF extension

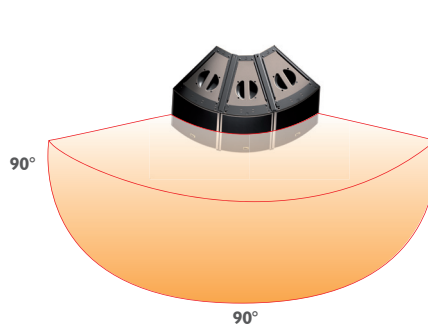
[ARCS WIFO_FI] + [SB18_60] - single enclosure + LF extension (pole mount)



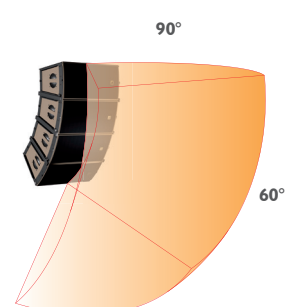
COVERAGE EXAMPLES



Pole mounted
1 ARCS® WIDE 90° x 30°



Horizontal / Ground-stacked or flown
3 ARCS® WIDE 90° x 90°



Vertical / Flown
4 ARCS® FOCUS 90° x 60°